

Professional Learning Communities at Purdue University Global's Center for Teaching and Learning

Laurie Hansen, MA, Faculty Developer

Joni Boone, MA, Faculty Developer

Liz Fitzgerald, MS, MBA, Manager of Teaching and Learning

What is a professional learning community?

Defining PLCs

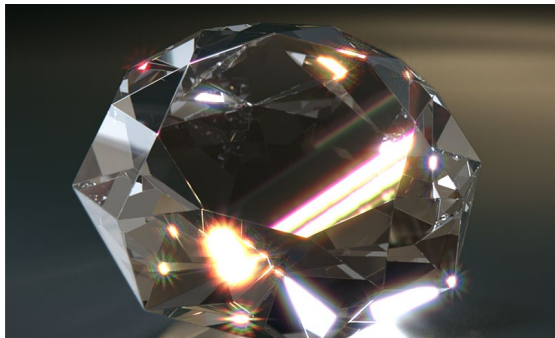
“A group of educators that meets regularly, shares expertise, and works collaboratively to improve teaching skills and the academic performance of students.”

(The Great Schools Partnership, 2014)

PLCs at PG

- Great Emerging Methods (GEMs)
- Creative Salon
- Module Course PLC
- Stretch Research PLC
- Diversity PLC

GEMs



Great Emerging Methods is referred to as GEMs. This is a long-standing group where faculty across the university share tips, what we like to call *gems*, that are useful in the classroom.

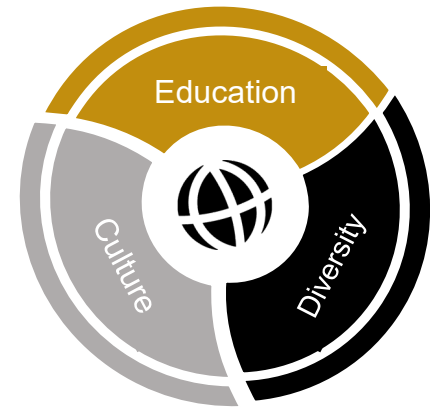
Pre-COVID Blended GEM Session



Creative Salon



Faculty from across the university discuss and present on the impact of creativity on education, diversity, and culture by presenting a creative art form, the theory behind it, and how faculty may use it in the classroom.



Module Course PLC



Faculty and staff who teach module courses share ideas and brainstorm with each other then share at the live event.

Much like GEMs, idea sharing and questions about module courses are encouraged.



Research PLC



Jeff Bailie



Ginger Cameron



Jack Deem



Eric Holmes



Lindsey Jarvie



Misty LaCour



Sue Pettine



Lisa Phillips



Holli Vah Seliskar



Robert Winters

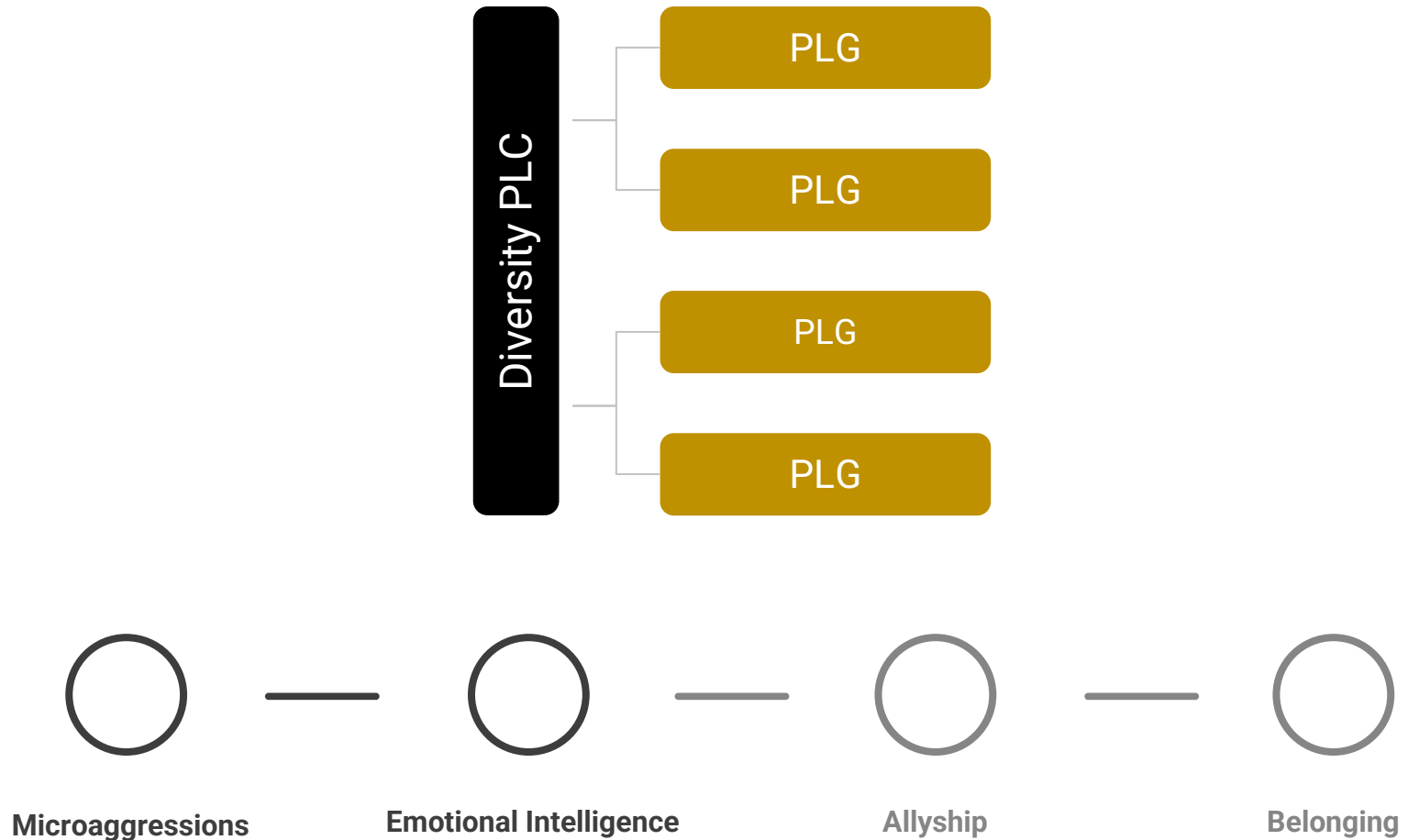
PLC, Teams, Body of Work



Diversity PLC



Diversity PLC Structure & Topics



How do you envision using PLCs?

Questions



THANK YOU

Team Email: askctl@purduglobal.edu

Laurie Hansen: lhansen@purdueglobal.edu

Liz Fitzgerald: lfitzgerald@purdueglobal.edu

Joni Boone: jboone2@purdueglobal.edu

References

Colman, G. (2016, January 28). The power of storytelling: How to build empathy with the right narrative. *Zapier*.

<https://zapier.com/blog/power-of-empathy/>

Gordon, S. & Rezvani, S. (2021, November 1). How sharing our stories builds inclusion. *Harvard Business Review*.

<https://hbr.org/2021/11/how-sharing-our-stories-builds-inclusion>

The Great Schools Partnership. (2014, March 3). Professional learning community. In *The Glossary of Education*

Reform. <https://www.edglossary.org/professional-learning-community/>